

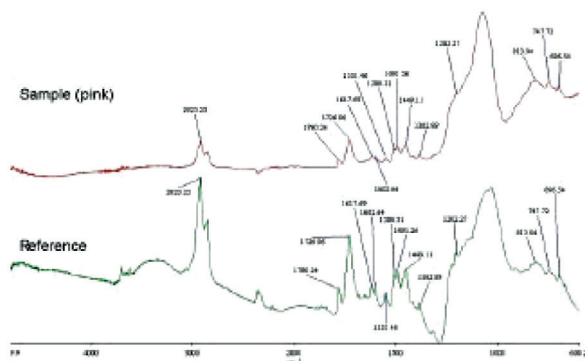
## Products Tested and Industries:

### Types of Polymers:

- ◆ Plastics
- ◆ Rubber & Resins
- ◆ Coatings
- ◆ Adhesives
- ◆ Sealants
- ◆ Biomaterials

### Areas of Industry:

- ◆ Food packing
- ◆ Polymer processing
- ◆ Recycling
- ◆ Industrial safety
- ◆ Biomedical
- ◆ Electronics
- ◆ Building materials
- ◆ Textile
- ◆ Fuel Cells
- ◆ Fuel



**EMSL ANALYTICAL, INC.**  
LABORATORY • PRODUCTS • TRAINING

[www.emsl.com](http://www.emsl.com)

[info@emsl.com](mailto:info@emsl.com)

### LOCATIONS



**WEST COAST**  
**888.455.3675**

**EAST COAST**  
**800.220.3675**

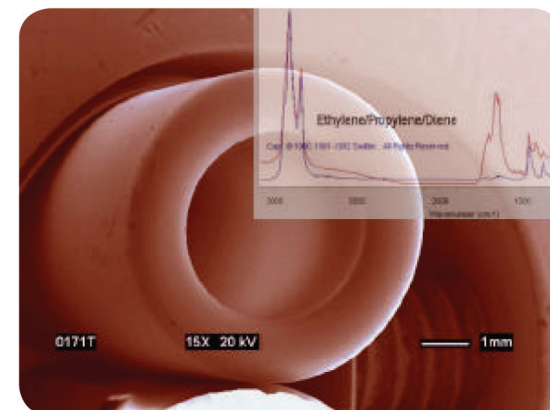
©2010 EMSL Analytical, Inc. All rights reserved



**EMSL ANALYTICAL, INC.**  
LABORATORY • PRODUCTS • TRAINING

## Polymer Science Division

Service Information for Polymer Sciences



*Quality Service Tailored  
to Meet Your  
Ever-Changing Needs*

**800.220.3675**  
**[www.emsl.com](http://www.emsl.com)**  
**[info@emsl.com](mailto:info@emsl.com)**

# Common Tests and Parameters:



**EMSL ANALYTICAL, INC.**

EMSL Analytical, Inc. is a full service analytical testing laboratory, which has been providing materials, forensic, industrial hygiene, indoor air quality, environmental, and chemical analysis services since 1981. Our experienced staff of PhD scientists, technical professionals and our continuously expanding roster of analytical instrumentation are increasingly called upon by clients to solve problems, answer questions, and respond to a wide spectrum of challenges from their customers, partners, and internal operations.

Our project scientists can design and implement a testing program that accomplishes your specific goals. We often function as “virtual resources” to our clients, complementing their own capabilities.

In addition, we have successfully provided failure analysis and comparative product performance evaluations for a wide range of clients. Our technologists work closely with your people to devise efficient and economic test strategies, methods, and matrices.

Contact the Polymer Science Division at EMSL Analytical to turn our capabilities into effective solutions for your business.

## Polymer Testing Services:

- ◆ Chemical analysis:
  - ◆ Deformulation
  - ◆ Reverse engineering
  - ◆ Raw material verification
  - ◆ Trouble shooting
  - ◆ Quality control
  - ◆ Material identification
  - ◆ Contamination identification
  - ◆ Additive/plasticizer identification
  - ◆ Elemental analysis
- ◆ Physical analysis
  - ◆ Degradation analysis
  - ◆ Molecular Weight & distribution
  - ◆ Environmental testing
  - ◆ Electrical property testing
  - ◆ Thermal analysis
  - ◆ Optical properties
  - ◆ Elastomer testing
  - ◆ Extractables
- ◆ Surface analysis
  - ◆ Coatings & thin films
  - ◆ Paints
  - ◆ Semiconductors: depth profiles of doping & impurities
- ◆ Failure analysis
- ◆ Mechanical testing
- ◆ Analytical chemistry

## Testing Capabilities:

- ◆ GPC
- ◆ FTIR
- ◆ TEM
- ◆ SEM/EDX
- ◆ XRF
- ◆ AES
- ◆ HPLC
- ◆ VOC
- ◆ PLM
- ◆ DSC
- ◆ Wet Chemistry
- ◆ Customized procedures
- ◆ Plus much more
- ◆ NMR
- ◆ GC/MS
- ◆ CP
- ◆ Flame AA
- ◆ GC
- ◆ RD
- ◆ NIR
- ◆ OM
- ◆ LM
- ◆ GA

